



SPECTATOR SAFETY

Thank you for spectating at the MSS SAFETY GORGE RALLYSPRINT

For your safety and the safety of competitors and officials, we ask that you follow these simple rules -

- Stand only in a safe place – see plans on the reverse
- Stand back from the road
- Stand on the high side of the road
- Keep behind walls or fences
- Keep clear of rally signs
- Keep clear of prohibited areas
- Pay attention at all times
- Sit back from the edge of the road
- Avoid blocking escape routes
- Expect the unexpected
- Listen for approaching cars
- Leave your dog at home
- Leave yourself room to move quickly
- Try to keep behind something solid
- Keep children under STRICT supervision
- Do not stand on or cross the road after car '00' has passed – even if there are no cars for a time – there may have been a delay.
- After the last competition car, the Sweep car with flashing green lights passes indicating that the course is now open and it is safe to leave
- Please take your rubbish with you
- Help the Marshals to run a safe Stage
- Please follow Rally Official's instructions otherwise the Stage will be stopped



Event Hotline - General enquiries
Only In an EMERGENCY telephone

0431 306 015
8410 8100

DISCLAIMER

Motorsport Activities are inherently dangerous recreational activities and there is significant risk of injury, disability or death if you do not wish to be exposed to such risks, then you should not participate in the Motorsport Activities.

I acknowledge that the risks associated with attending or participating in Motorsport Activities include but are not limited to the risk that I may suffer harm as a result of:

- motor vehicles (or parts of them) colliding with other motor vehicles or persons or property;
- other participants acting dangerously or with lack of skills;
- high levels of noise exposure;
- acts of violence and other harmful acts (whether intentional or inadvertent) committed by persons attending or participating in the event; and
- the failure or unsuitability of facilities (including grand-stands, fences and guard rails) to ensure my safety.

Exclusion of Liability, Release and Indemnity

In exchange for being able to attend or participate in the Motorsport Activities, I agree:

- to release Motorsport Australia and the Entities to the extent that any or all of them are providing Recreational Services from all liability for:
 - my death;
 - any physical or mental injury (including the aggravation, acceleration or recurrence of such an injury);
 - the contraction, aggravation or acceleration of a disease;
 - the coming into existence, the aggravation, acceleration or recurrence of any other condition, circumstance, occurrence, activity, form of behaviour, course of conduct or state of affairs:
 - that is or may be harmful or disadvantageous to me or the community; or
 - that may result in harm or disadvantage to me or the community,
- howsoever arising from my participation in or attendance at the Motorsport Activities;
- to indemnify and hold harmless and keep indemnified Motorsport Australia and the Entities to the maximum extent permitted by law in respect of any Claim by any person; and
 - to attend at or participate in the Motorsport Activities at my own risk.

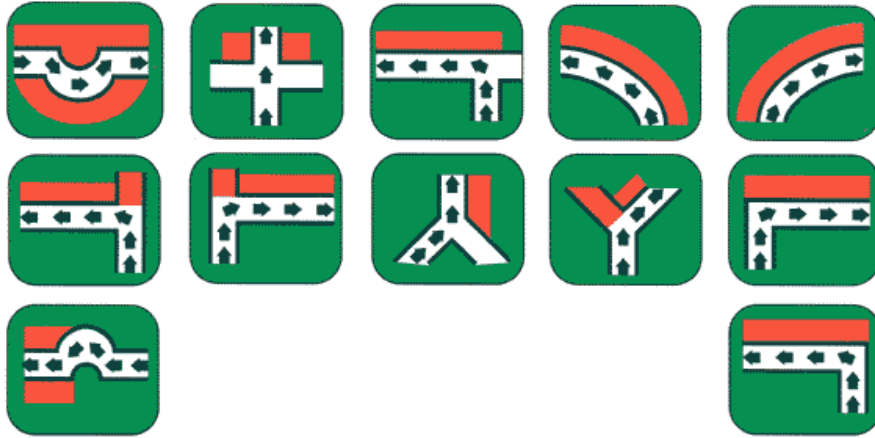
For the full disclaimer go to: https://www.motorsport.org.au/docs/default-source/disclaimer/motorsport-australia_general-disclaimer.pdf



SPECTATOR SAFETY

Take a good look at the drawings below! The areas marked in red are restricted.

Standing there is very dangerous and there is a great possibility of cancelling the Special Stage.



Be on alert for rally cars while driving to Spectator Areas. When parking, make certain that you leave room for rally cars and emergency vehicles to pass unimpeded.



Allow plenty of time to reach your selected viewing point. You should reach the viewing point by the time the first car is due to start the stage as per the itinerary.



If you notice anything that needs immediate intervention, please inform the closest marshal or radio operator.



Always stay behind the safety tape or barriers.



Do not stand in areas with no means of escape in case of emergency.



Do not approach dangerous areas. Follow the instructions of marshals who are there for your safety.



Do not get too close to the stage roads. Better and safer viewing is often found from a higher vantage point.



Remain in your viewing area until the stage is finished. Do not leave until the Sweep vehicle has passed.



Do not interfere with the organisers, cooperate with them. Their primary concern is providing a safe motorsport event for all.